



This contemporary yet traditional design blends modern influences with time-honored craftsman elements.

The two story great room features a fireplace and built-ins. The study is a great place to catch up on your reading or surf the net. The dining room has a tray ceiling and is a perfect setting for formal dinners and occasions. The kitchen and dinette are visually accessible from the great room – yet offer a degree of privacy and intimacy.

The large master suite has a walk-in closet and private bath with soaking tub and his and hers vanities. Upstairs, you'll discover a wonderful loft which overlooks the great room. Two additional bedrooms complete the space.

The Maple also features a 2 car garage and covered front porch.

Contact [Sales Rep] at (440) 555-1212 or [info@barringtonhomesohio.com](mailto:info@barringtonhomesohio.com) to learn more about this great floorplan.

Starting at \$299,900



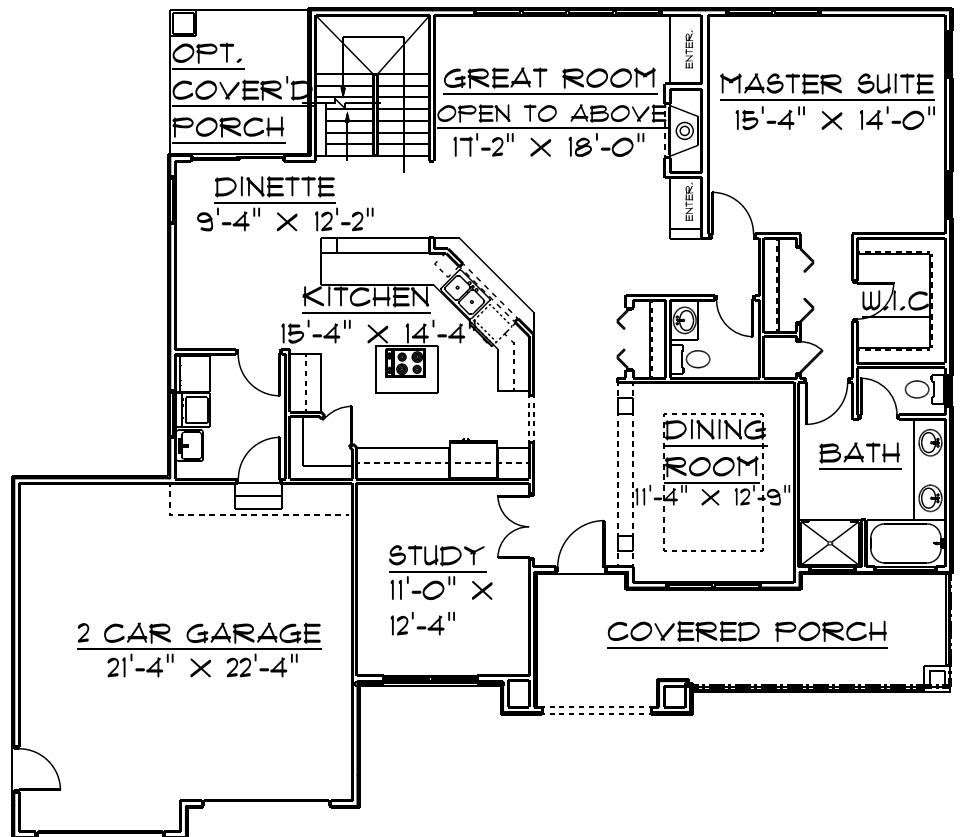
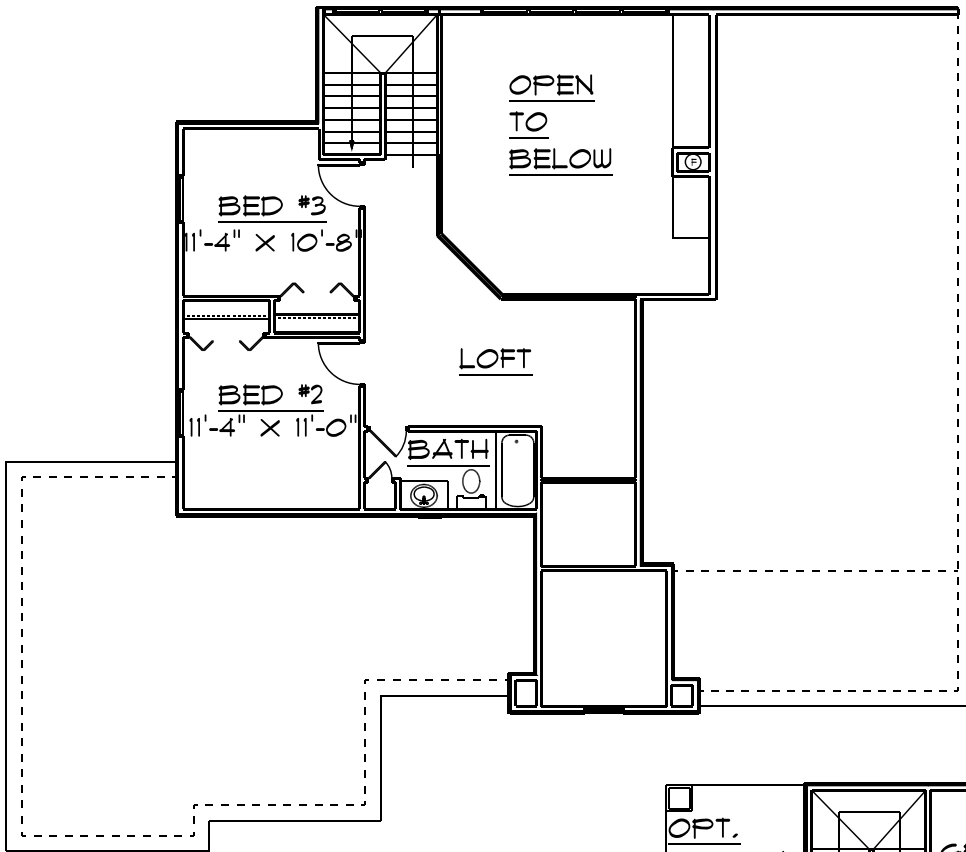
Caption

### The Maple

3 Bedrooms

2 Baths

2,000 Square Feet



Disclaimer: Lorem ipsum dolor sit amet, consectetur adipiscing elit. Sed do eiusmod tempor incididunt ut labore et dolore magna aliqua. Ut enim ad minim veniam, quis nostrud exercitation ullamco laboris nisi ut aliquip ex ea commodo consequat. Duis aute irure dolor in reprehenderit in voluptate velit esse cillum dolore eu fugiat nulla pariatur. Excepteur sint occaecat cupidatat non proident, sunt in culpa qui officia deserunt mollit anim id est laborum.

The Maple  
 3 Bedrooms  
 2 Baths  
 2,000 Square Feet

**BARRINGTON**  
 HOMES  
 9030 Cabriolet Avenue  
 Concord Township, Ohio 44060  
 Tel: (440) 953-5800  
 info@barringtonhomesohio.com  
 www.barringtonhomesohio.com